



THE LEAGUE OF WOMEN VOTERS
OF TOPEKA/SHAWNEE COUNTY

VOTER

President: Jan Waide
1618 SW 28th St.
785-233-7008 (h)

Membership: Nancy Whiffen
215 N Broadmoor
785-235-2104 (h)

Voter Editor: Carol Yoho
3013 SW Quail Creek Dr.
785-273-3089 (h)

May 2006

2 Tuesday Topics - Lunch 11:30 am, TSCPL
"The Status of Women in Kansas" by Jana Mackey,
Lobbyist for the National Organization for Women



NOTE: History Day suffrage display creators, 7th grade honor students, will be on hand as we gather to share their award-winning display on **Susan B. Anthony** [Read at bottom of page 5] Our meal is quiche, tossed salad, rolls, cookie, cookie & coffee/water.

5 & 6 Garage Sale - 1618 SW 28th St. - Set-up is Fri., sale on Sat. [See also, p. 6]

9 Board Meeting -Members welcome -Noon, O'Dooley's,1930 Westport Dr.
(No extra June VOTER. You may send any July/August materials to **Carol Yoho: cyoho@cox.net**)

10-11 KS Conference on Poverty, Ramada Inn -Sponsored by the Kansas Association of Community Action Programs.

Details at: <http://www.kacap.org/UpcomingEvents/upcomingevents.html>

June 2006

6 Tuesday Topics - Lunch 11:30 am, NOTE: location is YWCA
"Legislative Wrap-Up" by Don & Judy Moler. Don is Exec. Director of the KS League of Municipalities. Judy works with the KS Association of Counties.

Our meal has not yet been determined. Menu will be posted on the web site when it has been determined.

10-13 LWVUS Convention - Minneapolis, MN

13 Board Meeting -Members welcome -Noon, O'Dooley's,1930 Westport Dr.

Jan Waide will be at LWVUS Convention. Gwen Elliott will preside.

(July/August VOTER materials due to **Carol Yoho:cyoho@cox.net**)

May & June
Tuesday Topics

May Tuesday Topics will be held in room **JCM 101B**, across from the Millennium Cafe at the Topeka-Shawnee County Public Library. Meals are available to the first twenty-five arriving, @ \$8.25/ea. Checks payable to the Millennium Cafe.

Please note that June Tuesday Topics location will be **Topeka's YWCA**. *

If you need a ride to any League event, contact Betsy Rohleder.



PreZ SeZ...

New League Year, New Challenges

Annual meeting is over.

We have a new budget and three new Board Members. We bid goodbye and thank you to Betsy Rohleder, Carol Yoho and Judy Moler.

We welcome Chelsey Smith, Nancy Shaughnessy and Georgia Sandlin to the Board. Georgia was on the Board before. In fact, she was the President several years ago. She is retiring from teaching in May and is ready to serve again. She has chosen the Finance and Fund Development job. Chelsey will head up Publicity and Promotion while Nancy Shaughnessy will take over Tuesday Topics.

There are still vacancies on the Board but we are working on those. There will be new committees forming and we will be calling on many of you to take up a new task. Please be willing to contribute your time and talent when you are called.

We will be deciding what local issue we wish to pursue when we meet in the Voice meeting on April 27. We have a tentative chair for a local study committee and she will be putting together a committee for that task.

On April 29, Pat Stinson, Betsy Rohleder and I will represent LWVT/SC at the State Council meeting in Lawrence. Gwen Elliot will also attend in her role as a LWVK Board Member. We will be presenting a new issue for discussion (and a possible decision) to the State Board. We would like to have a Student Rate for membership so that we could attract some young adults from Washburn. We think this issue should be popular in Manhattan and Lawrence also. This was suggested by Chelsey Smith. New members with new thoughts and ideas are just wonderful! And so stimulating to the oldsters! We will let you know what the State Board thinks of our suggestion.

See you at Tuesday Topics on May 2 and do not forget to bring us your wonderful treasures (that you no longer need) for the garage sale May 5 (set up) and May 6 (sale) at 1618 SW 28 St. (just off Burlingame Road). In the mean time, stand up and speak out for good government!

— by *Jan Waide*



New contact information:

Carol Rousey
7424 Harrisonwoods Pl.
Charlotte, N.C. 28270
704-321-2020
crousey@alltel.net

LWVUS CONVENTION

Friday, June 9 - Tuesday, June 13, 2006
Hilton Minneapolis, MN

“Meeting in the Middle”

Garrison Keillor, comedian, author and host of "A Prairie Home Companion," will be the banquet speaker. Google "LWVUS convention" for details.

League of Women Voters T-SC

Jan Waide, President
jswaide@aol.com
233-7008

Edith Bronson, Secretary
ebronson@kspress.com
228-9773

Currently Vacant,
President-Elect

Carol Yoho, *Voter* Editor
cyoho@cox.net
3013 SW Quail Creek Dr.
66614-4131
273-3089

Gwen Elliott,
Vice-President
3469 SE Crestwater Dr.
267-4037

Nominating Committee
Betsy Rohleder, Chair
brohleder@cjnetworks.com
233-9262 (w)
357-1995 (h)

Nancy Whiffen, Director,
Membership
twowhiffs@cox.net
235-2104

Send address changes to:
Sybil Wiegman, Treasurer
2805 SW Tall Grass Dr.
66614-6026
478-1679



Vist: lwvtsc.org

“History of the Mental Health Care System in KS”

by Dr. Roy Menninger

[Dr. Menninger’s fourteen page report is available at “LWVTSC.org.” Select “Mental Health Study” from the site menu.]

Psychoiatry has no linear course of development, as have other scientific studies. Rather, competing, bitterly opposing schools have ruled. Asylums have existed since the Middle Ages. However, they have been primarily custodial in nature, often in dreadful conditions.

In the 18th Century European Enlightenment generated a progressive social philosophy that institutions could cure the mentally ill. Hospitals were founded in London, Florence, Paris and Philadelphia 1751-1796.

In the 19th Century the rise of science established new theories on mental illness--that they were brain-based and genetic. Treatment was still primitive and limited. Social reformer Dorothea Lynde Dix focused on the sad plight of the mentally ill in jails & prisons and was personally responsible for opening at least 30 more state hospitals.

In the 20th Century diagnosis and treatment pursued parallel separate traces: biological and psychological theories and treatment. Biological treatments included total tooth extraction and causing convulsions with electrical shock. Early drugs included laxatives, opium, morphine and sedatives. Physical treatments included hydrotherapy, sleep therapy and control of rest, spas, and diet. Between 1896 and 1912 Sigmund Freud developed psychoanalysis, a treatment widely accepted in the U.S. In 1925 the Menninger Sanitarium opened in Topeka.

During and after WWII successful treatment of psychiatric casualties of war lent enthusiasm and hope for successful treatment. Important theories included ideas that outpatient treatment of disturbed persons was possible, life experiences were emphasized, new psychotropic drugs were introduced, and the National Institutes of Health and Mental Health were established.

Post-war there was an upsurge of public interest in mental health, with an increase in the number of appli-



left, Dr. Roy Menninger

cants for professional training. In 1955 the AMA and American Psychiatric Association created a Joint Commission on Mental Illness and Health, producing a report, “Action for Mental Health.” This report, promoting a community-oriented perspective, was released to the public in 1961. One concrete result of the study was development of Community Mental Health Centers (CMHCs), run with federal and local county funds but not involving state funding.

Deinstitutionalization occurred between 1955 and 1970. The public had become appalled by conditions in state hospitals. Additionally, an antipsychiatry movement was afoot, and the rise of civil rights movement, which included the mentally ill. Maintaining consumers within the public sector was considerably less expensive than hospitalization. BUT, the community mental health center system was totally unprepared to care for the severely ill.

Even today there is virtually no provision for services to the actively ill persons pushed out of the state hospitals. In the 40 years prior to 1994 there was an 88% decrease in the number of hospital beds available for those with schizophrenia, manic-depressive disorders and those with organic brain disease. At the same time costs of treatment have increased five-fold.

In the 1970s and 80s the role of in-patient treatment has diminished, with increasing emphasis on out-patient treatment/community treatment services.

In the 1990s Mental Health Reform legislation introduced major changes, including increased cooperation between hospitals and CMHCs. Specialized community services increased to target populations and a majority of adult consumers are living independently, with the other half involved in work of educational activities.

In 1997 the Topeka State Hospital closed.

Between 1998 and 2003 there was a decrease in third party reimbursement of psychiatric patients while state hospitals increasingly used their beds for acute, short-term stabilization rather than treatment.

—continued on p. 4

Tuesday Topics, April

—continued from p. 3

Emphasis was on “efficiency” measured by short lengths-of-stay and rapid return to the community and CMHCs.

In 2003 a report from the President’s New Freedom Commission recommended:

- addressing the stigma of mental illness
- dealing with unfair treatment limitations and financial requirements placed on mental health benefits in private health insurance
- insuring that services and treatments are consumer/family-centered
- focusing care on increasing consumers’ ability to cope successfully with life’s challenges, on facilitating recovery, and on building resilience

Dr. Menninger is involved with the **Kansas Mental Health Coalition**, Topeka. In 2004 they responded in Kansas by organizing a series of “summit meetings” with consumers, families, providers and administrators and shared these findings with the Governor’s Mental Health Services Planning Council:

- I Americans understand that mental health is essential to overall health.
- II Mental health care is consumer/family-driven.
- III Disparities in mental health services must be eliminated.

IV Early mental health screening, assessment, and referral to service should be common practice.

V Excellent mental health care must be delivered and research accelerated.

VI Technology should be used to access mental health care and information.

Good treatment now means both psychopharmacology and psychosocial treatment, plus environmental support. Emphasis of care has shifted from symptom suppression and cure to recovery, resilience and successful management of illness.

Services are still insufficient in many places, especially rural and frontier areas. Also, there is an absence of a mechanism to prevent patients from drifting out of the system.

Our guiding philosophy should be a commitment to doing what is needed to enable mentally ill individuals to live and work in their communities, including ready access to information about services and the services themselves. The ill also need access to other resources and services such as housing, transportation, education, vocational training and job opportunities.



April 11, 2006 Board Briefs

A joint meeting of the new and retiring board members met at noon at O’Dooleys, April 11, with 11 present. New members are **Nancy Shaughnessy, Chelsey Smith and Georgia Sandlin**; retiring members are **Betsy Rholeder, Judy Moler and Carol Yoho**.

The board: Received members’ final reports of the League year; plans to explore interest rates

to receive a higher return on accounts; will have the latest information on our web site <lwvtsc.org>; reviewed plans for upcoming meetings and the garage sale May 6; and held preliminary discussions about portfolio assignments.

— by **Edith Bronson**,
LWVT-SC Secretary



Annual Meeting, April 1, 2006

The LWVT-SC Annual Meeting was held at 9:00 AM on April Fool's Day at the YWCA beginning with a light brunch and "laughter massages" lead by **Maggie Kelley, Certified Laughter Leader.**

The members:

- Were welcomed by President Jan Waide for the 10:00 AM business meeting;
- Heard that the 2005-2006 budget had a \$600 surplus because of fund raisers, and that the books had been audited and no discrepancies found;
- Received the Annual Meeting Booklet with reports of directors, standing committees and special committees;
- Adopted a \$9,077 budget for 2006-2007;
- Elected Georgia Sandlin, Chelsey Smith, and Nancy Shaughnessy as directors and Chair Betsy Rohleder, Nancy Sargent and Dorothy Harder as Nominating Committee, all by acclamation; and gave directions to the board.

Following announcements and adjournment, door prizes were awarded.



Left, Maggie Kelley, guest speaker

Directly below: volunteers Sue Gather, Sybil Weigman, and Betsy Rohleder

Bottom: hee hee hee, ha ha, ha, ho, ho, ho. Yeah!



Honor students place in History Day competition with suffrage theme



Kayla DuBois & Christy Peterson, 7th grade students at Washburn Rural Middle School, placed 2nd at Regional History Day held at Washburn University on February 25, 2006.

Their category was "Junior Group Exhibits." The theme this year for National History Day is "Taking a Stand in History." The girls chose **Susan B. Anthony**, titling their exhibit "*Count Your Egg Money and Read Your Bible. Not for Susan B. Anthony.*"

Left, in photo, is **Kayla DuBois**, daughter of Leroy and Kathy DuBois, Topeka.

Right, in photo, is **Christy Peterson**, daughter of Corey and Denise Peterson, Topeka.

Their win qualified the girls to go to State History Day on April 22, 2006 at the Eisenhower Museum in Abilene. 1st and 2nd place at State allows the entries to compete at National History Day at the University of Maryland/Washington D.C. in June.

History Day Sponsor is Mrs. Donna Sanders, Washburn Rural MS Gifted Facilitator. The girls sought information, via e-mail, in planning their exhibit from LWVTSC.

GARAGE SALE, MAY 6, 2006

1618 SW 28th St., home of Jan Waide

CONTRIBUTIONS AND SET UP, MAY 5, 2006

Items needed: Clothing, clean, mended, priced and on hangers; Jewelry, priced; Linens, towels, sheets, etc. again clean and in good repair; Household items, curtains, small rugs, decorative items; Kitchen ware, small kitchen appliances; tableware, dishes, glassware, pots, pans, mixing bowls, etc.; Children's items, books, puzzles, toys, etc. clean and in good repair; Tools and Gardening equipment; Plants, sm. Starter plants, named and priced; Books, especially paperbacks; Pictures and Art objects, priced; Office equipment; Games and anything else you think might sell.



PLEASE PRICE YOUR ITEMS IF YOU CAN! EVERYTHING SHOULD BE CLEAN AND IN GOOD REPAIR!

We still need a few people to work on Saturday, May 6 in 2 ½ hour shifts between 7:30 am and 5:00 pm. Call Jan Waide, 233-7008, if you can work or if you have any questions.



NEW on our web site: hot links to a cards sales page. Tell your friends! Support LWVTSC.

<http://www.lwvtsc.org/cards.html>

2006-007 Board:

Continuing on the Board:

Jan Waide
Gwen Elliott
Edith Bronson
Sybil Weigman
Pat Stinson
Nancy Whiffen

New to Board:

Georgia Sandlin
Nancy Shaughnesy
Chelsey Smith

Nominating Committee 2006-07:

Betsy Rohleder, chair
Nancy Sargent
Dorothy Harder

Exiting Board:

Betsy Rohleder
Judy Moler
Carol Yoho

The LWVUS board has recommended the adoption of the abolition concurrence! Read more on the LWVUS convention website (Go to the members site, click on workbook, then on Proposed 2006-2008 Program and scroll down to "Recommendations in Brief." Basically, 115 Leagues recommended concurrence and the Board recommends adoption of the concurrence!)

Good news from Connecticut on the death penalty

Connecticut's concurrence study on the death penalty wrapped up on 4/1/2006, the ballots were counted and over 92% of those responding agreed with the concurrence statement to recommend abolition of the death penalty in Connecticut. The State Board reviewed the process of the study, the participation of the members and voted to accept the position at its Board Meeting last Tuesday. So it is official and Connecticut is also in the ranks of those State Leagues who have studied the death penalty and recommended its abolition.

Changing the name of League????

A discussion item at UWVUS Convention will be to consider changing the name of the League and whether a study should be undertaken on this topic. If you have an opinion, please share it with a board member, and particularly with your Convention delegates so they will be prepared to represent your Leagues. Jan Waide, Betsy Rohleder, Carol Yoho (and perhaps others) plan to attend the convention in Minneapolis, MN, from LWVTSC.



From LWVUS Presidents' Update:

- 1. FBI Action Perceived As Intimidation** LWVUS and Common Cause yesterday released a statement expressing concern over a recent incident involving the League of Women Voters of Berrien and Cass Counties in Michigan, Common Cause and the Federal Bureau of Investigation (FBI). This statement was distributed widely by both LWVUS and Common Cause. Read the statement.
- 2. Statement from Reform Groups on H.R. 4900 and H.R. 1606** The LWVUS and other national reform groups released a statement proclaiming their strong support of H.R. 4900, the "Internet Free Speech Protection Act of 2006," and their opposition to H.R. 1606. These groups are committed to preventing Congress from unraveling and undermining the nation's campaign finance laws.
- 3. New Resource for Leagues Interested in Promoting an Independent Judiciary** Luke Bierman, Director of the Institute for Emerging Issues at North Carolina State University, has written an article, "Courts are Different," for our Safeguarding the U.S. Democracy program. This article, which explains the importance of separation of powers and a strong third branch of government, is a valuable resource for all Leagues interested in promoting an independent judiciary. For more information or to get involved with the Safeguarding the U.S. Democracy project, contact Maria Pilar Lampert-Grassi: mplampertgrassi@lww.org
- 4. Connecting Students, Teachers, Legislators and League Leaders** The League builds on past efforts with the Youth Leadership Initiative (YLI), a program of the University of Virginia Center for Politics, to engage students in the democratic process. YLI develops and distributes free K-12 civic education resources. Hundreds of schools are now participating in the annual YLI e-Congress, an interactive online simulation that guides students through the legislative process. Please visit www.youthleadership.net.

Shawnee Co. Commission

March 23, 2006 by Jan Waide

The Commission considered a Resolution that would reorganize the Shawnee County Facilities Management and Human Resources Departments. This resolution put Facilities Management under direction of Charlene Mischke, Purchasing Director, instead of Rich Davis, Human Resources Director. Salaries were adjusted according to the reassignment of duties. Commissioner Kane asked \$2400.00 to be withheld from the salaries of all affected employees and designated as travel allowance of \$200.00 per month. Her motion failed for lack of a second. The original Resolution was passed and staff was thanked for their willingness to cooperate with the reorganization.

March 27, 2006 by Mary Ann Breitbach

This was a short meeting. The Consent Agenda quickly being passed by a 3-0 vote. The main issue concerned the easements and payments to property owners of the agreed settlement amounts for the construction of the SE 29th and Croco Road intersection. Also passed were the appointments of Carol Jory to the Shawnee County Library Board, Michael Eichten to the Kansas Expocentre Board, and Commissioner Maurice Kane to the Helping Hands Humane Society Board of Directors.

Under New Business commissioners voted 2-1 to approve expenditures of \$2,703 to restripe the Expocentre parking lot and two forklift repairs. Commissioner Vic Miller questioned if the work could be done less expensively in house. An annual maintenance contract for the call accounting software and purchase of software and software support services for the Register of Deeds passed 3-0.

Anne Freeze, Health Agency Director requested that two vacant positions be filled. The first one is Primary Care Registered Nurse Team Leader and the other is a Registered Nurse working as a float nurse in Family Planning and Primary Care. She also requested that a contract with Baker University School of Nursing be renewed. The program allows students to participate in patient care activities at the Health Agency. Public Works then asked that an Inventory Specialist position be filled. All were approved 3-0.

March 30, 2006 by Jan Waide

During the discussion of the Topeka Tinman Race on June 17, 2006, John Knight, Parks and Recreation Director, reported he expected approximately 600 people to participate.

The Commission agreed to increase the starting annual salary of the Medical Director position to \$160,000. The last one got \$140,000. The Medical Director serves at the pleasure of the Commission or Director, Anne Freeze.

The owners of Doggie Day Care located at 8235 SW 10th St. asked that an existing conditional use permit for that property be corrected. They wanted to make some improvements but found that the address of the location had been reported incorrectly in 1970 and thus they could not get the right permits. The Commission corrected the error immediately through the appropriate staff.

April 6, 2006 by Jan Waide

The Commission added a direct appeal process to the County Commission to the Shawnee County Zoning Regulations which is a divergence from the previous "hard rule".

John Kabus, Weed Department Supervisor, asked to be able to donate a surplus rental used weed sprayer that Shawnee County no longer needs to Wabaunsee County. It seems the land owners right over the county line have asked to borrow the Shawnee County sprayers because they can't rent one from Wabaunsee County. Commissioner Endsley made the motion to approve but Commissioner Miller had his doubts. Mr. Kabus finally convinced him by pointing out that the weeds do not know where the county line is and they come right on over on our territory making the work load of his department greater. Commissioner Kane was absent but Miller finally approved the motion.

April 10, 2006 by Mary Ann Breitbach

The County Commission unanimously approved Home Rule Resolution No. HR2006-3 which amends the text of the zoning regulation on building permits. The new regulation requires that access to a property match up with that lot's address

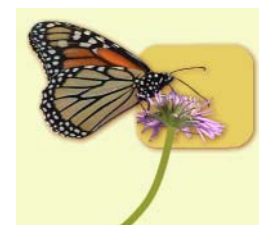
and street frontage. This would enable police, ambulance workers, and firefighters to better locate and access houses.

The County Commission also approved 3-0 a contract with Professional Engineering PA for the services of a Resident Project Representative for the Lake Shawnee spillway and channel rehabilitation projects. Because the two projects are to be done at the same time, the cost of \$103,000 is considerably less than the original estimate of \$166,800.

Election Commissioner Elizabeth Ensley's request to solicit bids was passed 3-0. The request was for ballot printing, printed envelopes for advanced voting, and equipment deliveries to voting sites. Also approved 3-0 was Treasurer Larry Wilson's request for personnel replacement and training before the peak summer season.

LWVUS NEWS continued

5. **League and Other Reform Groups Urge Representatives to Close the Soft Money Loophole** The LWVUS and other national reform groups sent a letter to the House of Representatives to support closing soft money loopholes and vote for H.R. 513. This bill passed the House, 218-209, on Wednesday, April 5.
6. **Arctic Refuge Threatened Again in Back-Door Budget Tactic** Action is needed to prevent Congress from trying again to use the budget process to open the Arctic National Wildlife Refuge (ANWR) to oil drilling! Drilling proponents still do not have the votes to open the Refuge outright, so they are trying to use the budget as a filibuster-proof vehicle to give oil companies access to the pristine lands. Urge the House of Representatives to keep ANWR out of the budget.
7. **Is Membership Recruitment as Important to Your League as Voters Service?** Our grassroots set us apart from other organizations. We are one of the few national organizations that have a true, active network of members throughout the country and we need to preserve this unique asset. The LWV is a presence in communities across the country safeguarding democracy and promoting civic engagement. Please focus the work of your League on a few things and do them well; make asking people to join one of your top priorities.
8. **Looking for Sunshine: Protecting Your Right to Know Resource Guide** The League's newly-released Looking for Sunshine: Protecting Your Right to Know, a resource guide to assist Leagues interested in openness in government, is now available for download on the LWVUS Web site.
9. **League Applauds FEC Internet Regulation** The League applauded the Internet regulation adopted by the Federal Election Commission (FEC) on March 27, which strikes a balance between protecting free speech and campaign finance laws. However, the League continues to urge opposition to the Hensarling bill, H.R. 1606. Although the FEC regulation eliminates the need for this bill, it may still be taken up on the floor of the House. The only purpose served by H.R. 1606 is to gut campaign finance laws and the soft money ban. The League has taken several actions on this issue.
10. **Arctic Refuge Threatened Again in Back-Door Budget Tactic** Action is needed to prevent Congress from trying again to use the budget process to open the Arctic National Wildlife Refuge (ANWR) to oil drilling! Drilling proponents still do not have the votes to open the Refuge outright, so they are trying to use the budget as a filibuster-proof vehicle to give oil companies access to the pristine lands. *Urge the House of Representatives to keep ANWR out of the budget.*
11. **League Urges EAC to Protect Voters Against Measures that Undermine Participation** The League sent a letter to the U.S. Election Assistance Commission (EAC) expressing concerns about implementation of the National Voter Registration Act in the states.



VOTER, May/June 2006:

Calendar 1
 Prez Sez 2
 Tuesday Topics Report 3-4
 Board Briefs 4
 Local League News & Wrap-ups 5-7
 Observer Reports 8-9
 LWVUS News 7 & 9

ADDRESS CORRECTION REQUESTED



CAROL YOHO, EDITOR
 3013 SW QUAIL CREEK DR
 TOPEKA KS 66614-4131



5 blank cards
 + envelopes for \$5.
 Contact Betsy Rohleder

Mark your calendar:

Volunteer:

Fri., May 5 (setup), Sat., May 6 (sale)

Annual LWV Garage Sale

@ Jan Waide's—1618 SW 28th St.—Details in May VOTER



Mark Prices on Each of Your Items
Please bring clothing on hangers

YES!

I want to add my voice to yours by joining the League of Women Voters. I enclose:
 \$48 for 1-year Individual Membership \$72 for a 1-year Household Membership
 \$85 for a 1-year Sustaining Membership Please send more information.
 I am unable to join the League at this time, but enclose a contribution of \$_____

Name _____
 Address _____
 City, State, Zip _____
 Phone (hm) _____ (wk) _____
 E-Mail (for Action Alerts) _____

Please send to:
 Sybil Wiegman, Treasurer
 2805 SW Tall Grass Dr.
 TOPEKA, KS 66614-6026
 785-478-1679

Make checks payable to League of Women Voters of Topeka-Shawnee County